

# Footfall Report for: St Helier, King Street

## Weekly Footfall

	Year to date %		Year on year %		Week on week %	
	2021	2020	2021	2020	2021	2020
St Helier, King Street	-12.0%	-37.2%	138.0%	-75.2%	-2.5%	0.6%
South West	-26.6%	-37.2%	254.4%	-80.9%	-7.3%	14.7%
UK	-34.7%	-35.7%	206.9%	-79.4%	-8.4%	17.2%

Benchmark calculations (Year on Year and Week on Week) have been calculated using like for like data sets (only those counters available in both comparison periods) to ensure statistical accuracy

The impact of Covid-19 on footfall means that subsequent to the anniversary of Lockdown 1 (23rd March 2021), it is important to add a further annual comparison of 2021 versus 2019 in order to provide a comparison to the last normal trading year. This comparison is provided on the final pages of this report.

## Headlines

The total number of visitors to St Helier, King Street for the last 52 weeks is 5,234,709 which is 34.9% down on the previous year.

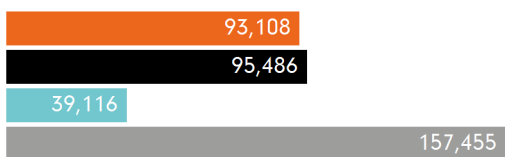
The total number of visitors for the year to date is 1,506,354 which is 12% down on the previous year.

The total number of visitors to St Helier, King Street in week commencing 3 May 2021 was 93,108.

The busiest day in week commencing 3 May 2021 was Saturday with 17,961 visitors.

The peak hour of the week was 15:00 on Saturday 8 May 2021 with footfall of 2,661.

## Footfall by week

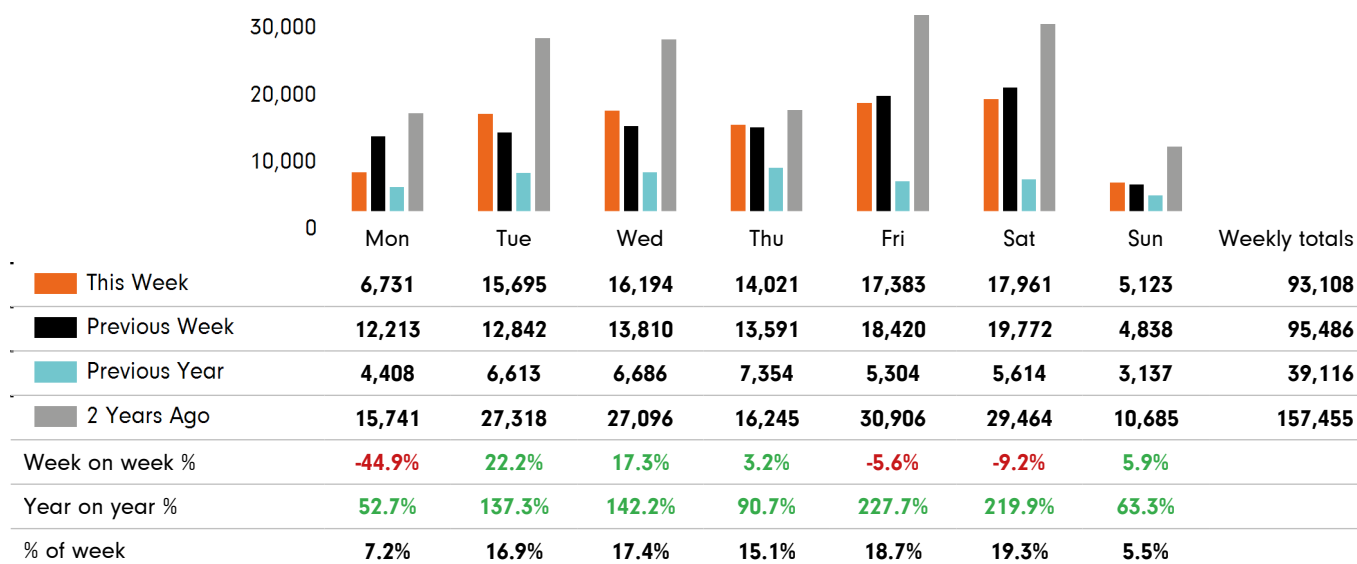


■ This Week    ■ Previous Year  
■ Previous Week    ■ 2 Years Ago

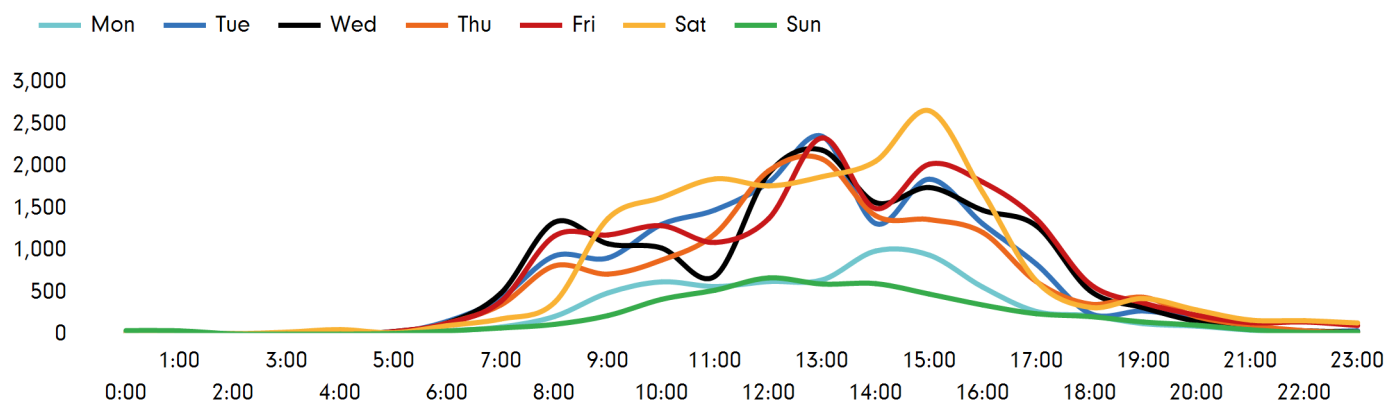
## Weather

	Mon	Tue	Wed	Thu	Fri	Sat	Sun
This week	14°	12°	11°	11°	13°	18°	17°
Previous week	12°	12°	11°	11°	12°	11°	12°
Previous year	17°	15°	17°	20°	21°	20°	17°

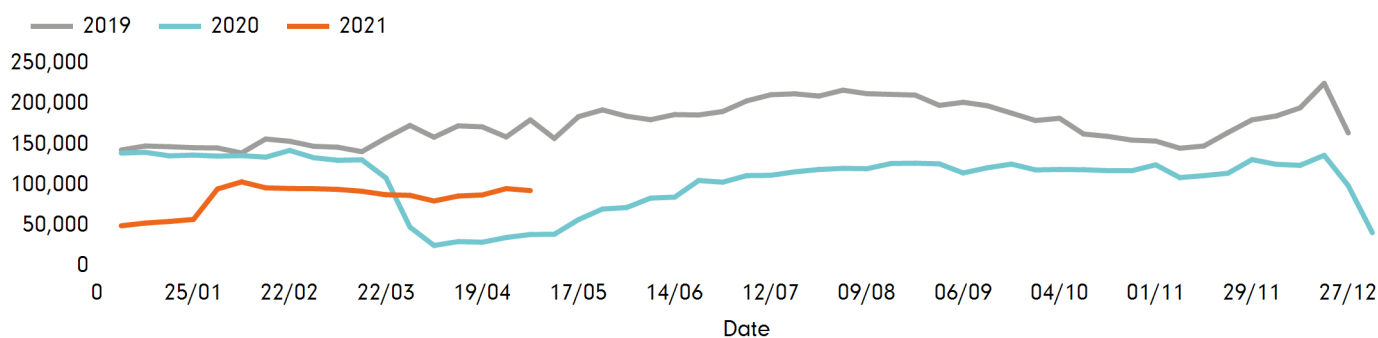
## Footfall by day



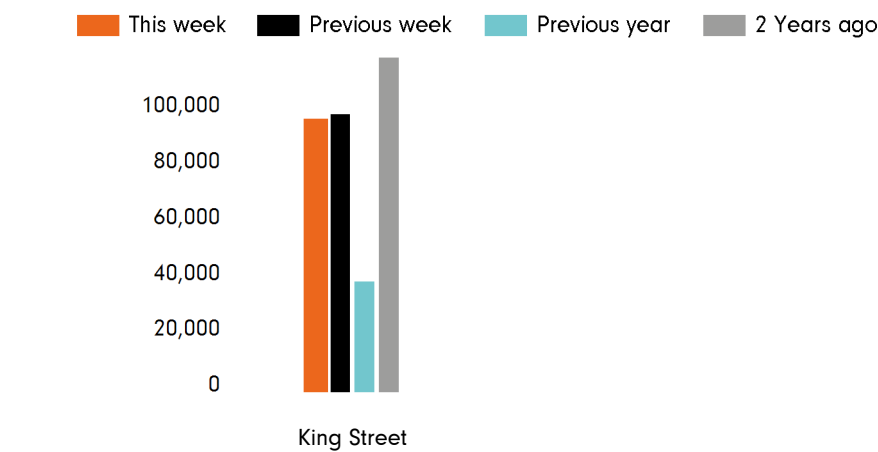
## Footfall by hour



## Footfall by week



Footfall by location



This Week	93,108
Previous Week	95,486
Previous Year	39,116
2 Years Ago	157,455
Week on week %	-2.5 %
Year on Year %	138.0 %

Notes

Year to Date % Change is the annual % change in footfall from January of this year compared to the same period last year. Week 1, 2021 to Week 18 , 2021 Vs Week 1, 2020 to Week 18 , 2020

Year on Year % Change is the % change in footfall for this week compared to the same week in the previous year.Week 18, 2021 Vs Week 18, 2020

Week on Week % Change is the % change in footfall for this week from the previous week. Week 18 2021 Vs Week 17 2021

2021 versus 2019 comparison follows on subsequent pages

Week 18, 2021. 03 May 2021 - 09 May 2021

## 2019 Comparison for: St Helier, King Street

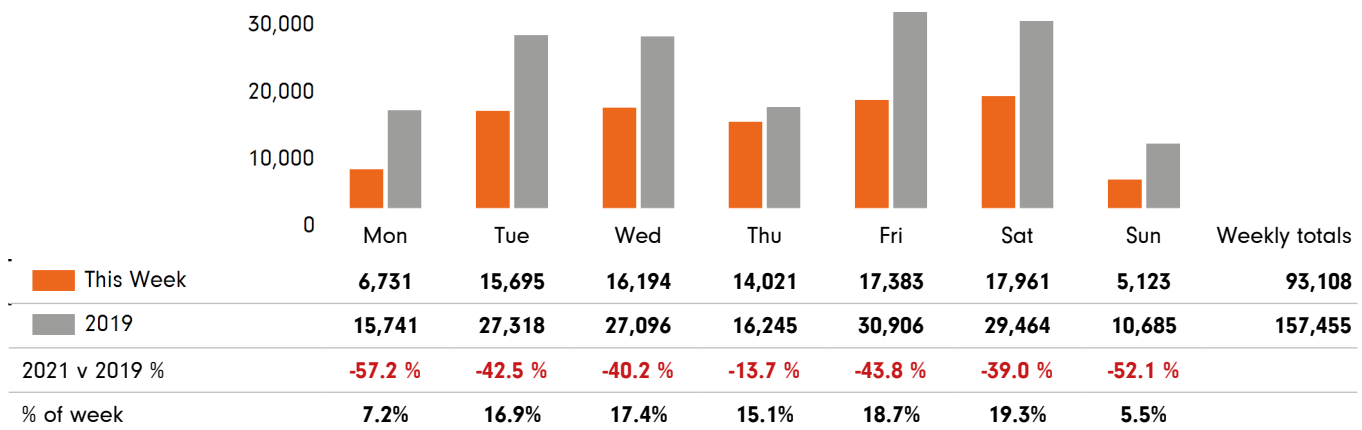
### 2019 comparison for St Helier, King Street

The impact of Covid-19 on footfall means that subsequent to the anniversary of Lockdown 1 (23rd March 2021), it is important to add a further annual comparison of 2021 versus 2019 in order to provide a comparison to the last normal trading year. This is provided in the section **below** and shows your current performance in 2021 against the similar time period in 2019

#### Headlines

	Year to date %	Year on year %
	2021 Vs 2019	2021 Vs 2019
St Helier, King Street	<b>-46.3 %</b>	<b>-40.9 %</b>
South West	<b>-57.0 %</b>	<b>-32.0 %</b>
UK	<b>-57.1 %</b>	<b>-35.6 %</b>

#### Footfall by day



#### Footfall by location

